

## Projecting media with Epson EX7235 Pro

The resolution of this projector is **1280 X 800** (WXGA).

**Image size** 33 inches (0.83 m) to 320 inches (8.13 m)  
(in native aspect ratio)

**Projection distance** 35.4 inches (0.9 m) to 425.2 inches (10.8 m)  
(in native aspect ratio)

**Projection methods** Front, rear, ceiling-mounted

**Optical aspect ratio** 16:10 (width-to-height)

If your images or pages in PowerPoint are formatted to this aspect ratio then they will fill the lighted area of the screen.

**Focus adjustment** Manual

**Zoom adjustment** Manual

**Zoom ratio** 1-1.2  
(Tele-to-Wide)

**Internal sound system** 2 W monaural

**Noise level** 37 dB (Normal Power Consumption mode)  
29 dB (ECO Power Consumption mode)

**Keystone correction angle**  $\pm 30^\circ$

**USB Type B port compatibility** One USB 1.1 and 2.0 compliant for USB display, external mouse control, firmware update, or copying menu settings

**USB Type A port compatibility** One USB 1.1 and 2.0 compliant port for USB device input, Epson document camera display, wireless LAN, firmware update, or copying menu settings

### Remote Control Specifications

Reception range 19.7 feet (6 m)

**Batteries** Two alkaline or manganese AA

## Projecting media with Epson EX7235 Pro

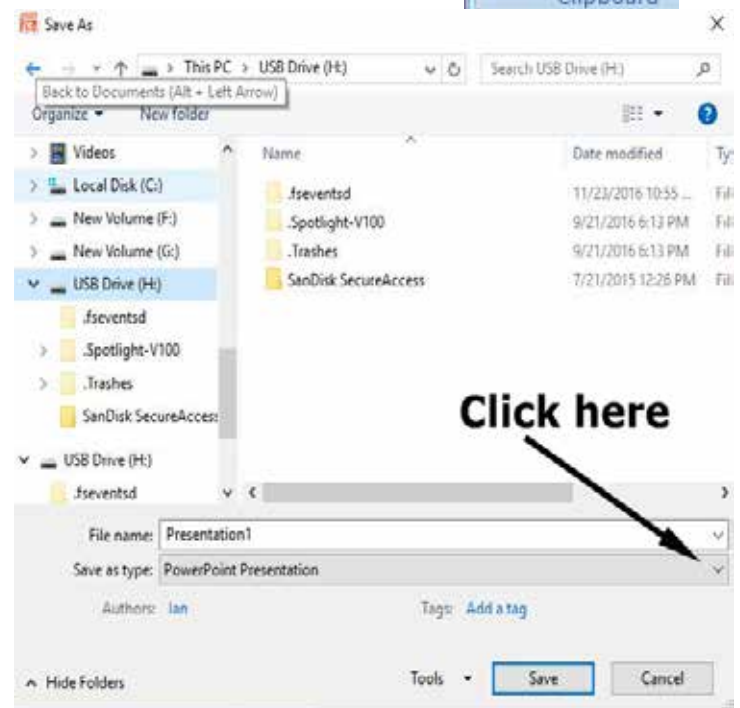
**USB Stick** - you can use the projectors remote to manage a **list of JPEGs**

For projecting slides from Presentation software e.g. PowerPoint, Open Office etc. Connect your computer (device) with the presentation software to the projector using the ports show below.

This projector will project slides from a PowerPoint presentation saved on a USB stick. **It will not recognize the PowerPoint file**, the slides must be saved as JPEGs

To save the PowerPoint presentation as JPEGs saved on a USB Stick:

1. In the home screen click Icon in the upper left corner.



2. Hover over Save As and click Other Formats.

3. In the save as window click the down arrow at the right of Save as type and click on JPEG File Interchange Format.

4. In the next window click Every Slide.

5. In the next window it will show where slides will be saved - click OK.

The slides are saved as Slide1, Slide2, Slide3 ..... etc.

The projector sorts slides alphabetically as well as by time.

I have had several people using time sort get slides out of order so I prefer alpha sort.

If you have more than 9 slides and your slides are named -

Slide1, Slide 2, Slide 3,... Slide 9, Slide 10, Slide 11 (powerpoint saves JPEGs with these names) the projector will sort them -

Slide 1, Slide 10, Slide 11, .... , Slide 19, Slide 2, Slide 3, Slide 4, Slide 5,

I recommend that slides be renamed alphabetically. One version to use -

A Slide 1, B Slide 2, C Slide 3, D Slide 4 ..... I Slide 9, J Slide 10, K Slide 11...

## CABLES

We have the capability to connect a variety of video and audio cables.



**Input ports on the Epson projector**

We have a 25 foot audio cable (mini plug, RCA connectors) and a 25 foot HDMI cable.

We have adapters for use where there is no HDMI port on your computer, tablet or phone.

These include: USB to HDMI

USB-C to HDMI

RGB to HDMI

Mini display port (thunderbolt) to HDMI

Lightning to HDMI

## WIRELESS

We have a dongle to facilitate wireless connection to the computer.

This requires installing Epson software on your computer. It is easy to use and safe.

[Download the software from Epson](#)